



New Quarter Ton Cal T/4. She Moves.

Bill Lapworth shows the way to the world's hot young naval architects with his radically new, radically fast Cal T/4. This strikingly beautiful new 24-footer promises to be the hottest contender in international Quarter Ton racing.

Her underbody is totally new and unique. She has a moderate displacement hull with a soft double chine and a long flat kicker leading to the powerful counter-balanced outboard rudder. This new configuration is designed to extend her waterline for higher speed, increase stability for greater drive, and

offer instantly responsive steering control. Initial sailing trials reveal her remarkable power and control both on the wind and off. She drives right through a hard chop and is uncannily swift in light airs.

The Cal T/4 looks and feels as good as she goes. Her roomy two-cabin interior is exquisitely finished in mahogany or optional teak. She has berths for four, an enclosed head, and a hanging locker. The cabin sides are fully insulated with attractive fabric-on-foam, and curtains and carpeting are standard.

The Cal T/4 has the feel of a much bigger boat. She looks fast just riding at anchor. Below, she looks, feels, even smells expensive. And under sail, the only thing those conventional big fast expensive boats will ever see is her mean looking stern.

If you're serious about Quarter Ton racing, see and sail the Cal T/4 before you buy anything else. In the meantime, write for our free color brochure.

Jensen Marine

A BANGOR PULP COMPANY
235 FISCHER STREET, COSTA MESA, CALIF. 92627

BOUNDARY ROAD, MARLBORO, NEW JERSEY 07746

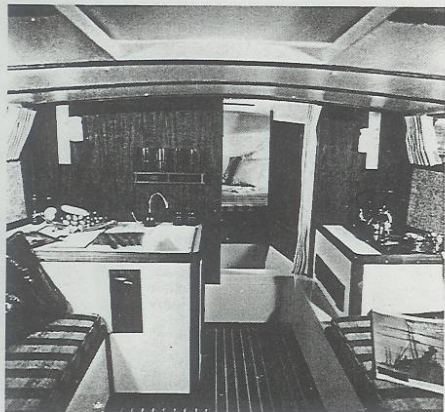
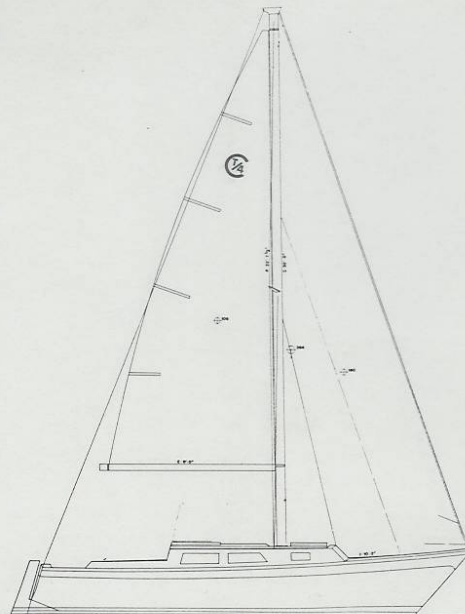


Cal boats have won more yacht races than any other boats in the world.

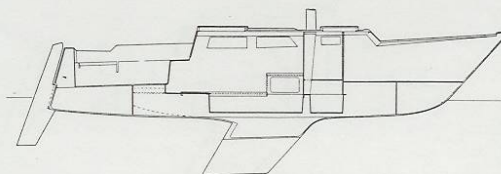
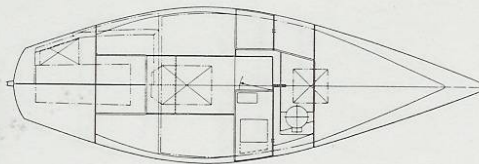
For More Information Write No. 250 on Reader Service Card

The very latest design of Bill Lapworth is aimed at the growth in popularity of level boat racing in the 1/4 ton range. The new Cal T-4, quarter ton design features a ballast ratio of 50% to

weight with an easily driven hull with long water line and a moderately high ratio sail plan that means speed and stability for the new breed of sailors.



L.O.A.	24'1½"	Hull	Fiberglass
L.W.L.	21'	Spars	Aluminum
Beam	8'	Ballast	2000 lbs.
Draft	4'	Displacement ..	4000 lbs.
Sail Area		Headroom	5'3"
Main	106 sq. ft.	Berths	4
Jib	150 sq. ft.	Rating	Quarter Ton
Rated Sail Area	256 sq. ft.	Designer ..	Bill Lapworth
		Price less sails ..	\$6,650



For further information on this advertisement circle number 229 on the Reader Service card.

Bill Lapworth shows the way to the world's hot young naval architects with his radically new, radically fast Cal T/4. This strikingly beautiful new Quarter Ton entry promises to be a true champion in the tradition of Bill Lapworth and Jensen Marine. You'll be hearing a lot about the Cal T/4. If you race one, we'll be hearing a lot about you.

POWERFUL DESIGN BUILT TO GO.

The underbody of the Cal T/4 is new and unique. Her moderate displacement hull features a soft double chine and a long flat kicker leading to the powerful counter-balanced outboard rudder. This configuration has the effect of extending the waterline for higher speed and increasing stability for greater drive, while offering light and instantly responsive steering control. She carries her considerable beam amidship, features a very high ballast-to-displacement ratio, and is

designed for extraordinary balance. The 2000-pound bolt-on lead keel is the optimum design for stability, strength and drive.

Initial sailing trials reveal her remarkable power and control both on the wind and off. She drives right through a hard chop and is uncannily swift in light airs.

The Cal T/4 gives all evidence of being the hottest contender in international Quarter Ton racing. And that's not all she is.

STRIKING STYLE ABOVE AND BELOW.

The Cal T/4 looks and feels as good as she goes. Her roomy two-cabin interior is exquisitely finished in mahogany or optional teak. She has berths for four, an enclosed head, and a hanging locker. Her spacious midship galley features a 40-pound ice chest, cabinetry for a two-burner stove, and a sink with freshwater pump and 10-gallon water tank.



The cabin sides are fully insulated with attractive fabric-on-foam. Curtains and carpeting are standard, with teak and holly sole as an option.

Standard deck gear and running rigging are complete and of the highest quality for strength and reliability. Main and genoa sheet blocks are Schaeffer. Sheet winches and the genoa halyard winch are Barlow. The aluminum main sheet traveler features a roller bearing car complete with control lines.

The cockpit is comfortable and efficient — designed for conditions met in long ocean races and extended cruises.

The Cal T/4 has the feel of a much bigger boat. She looks fast just riding at anchor. Below, she looks, feels, even smells expensive. Under sail, the only thing those conventional big fast expensive boats will see is her mean looking stern.

CAL T/4: NEW QUARTER RACER WITH STYLE AND





